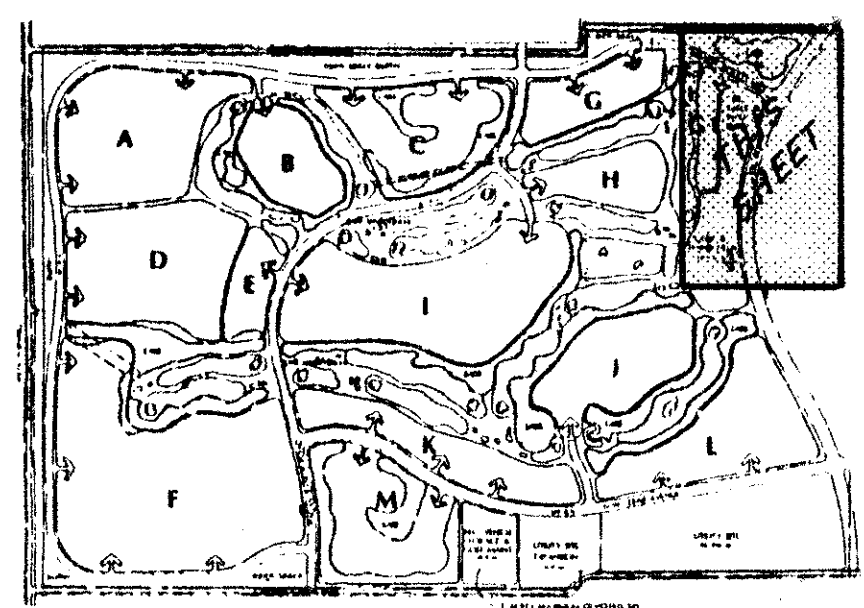


55/13

DRAWING NUMBER

DRAWING NUMBER

DRAWING NUMBER



KEY MAP
NOT TO SCALE

ABERDEEN - PLAT NO. 2

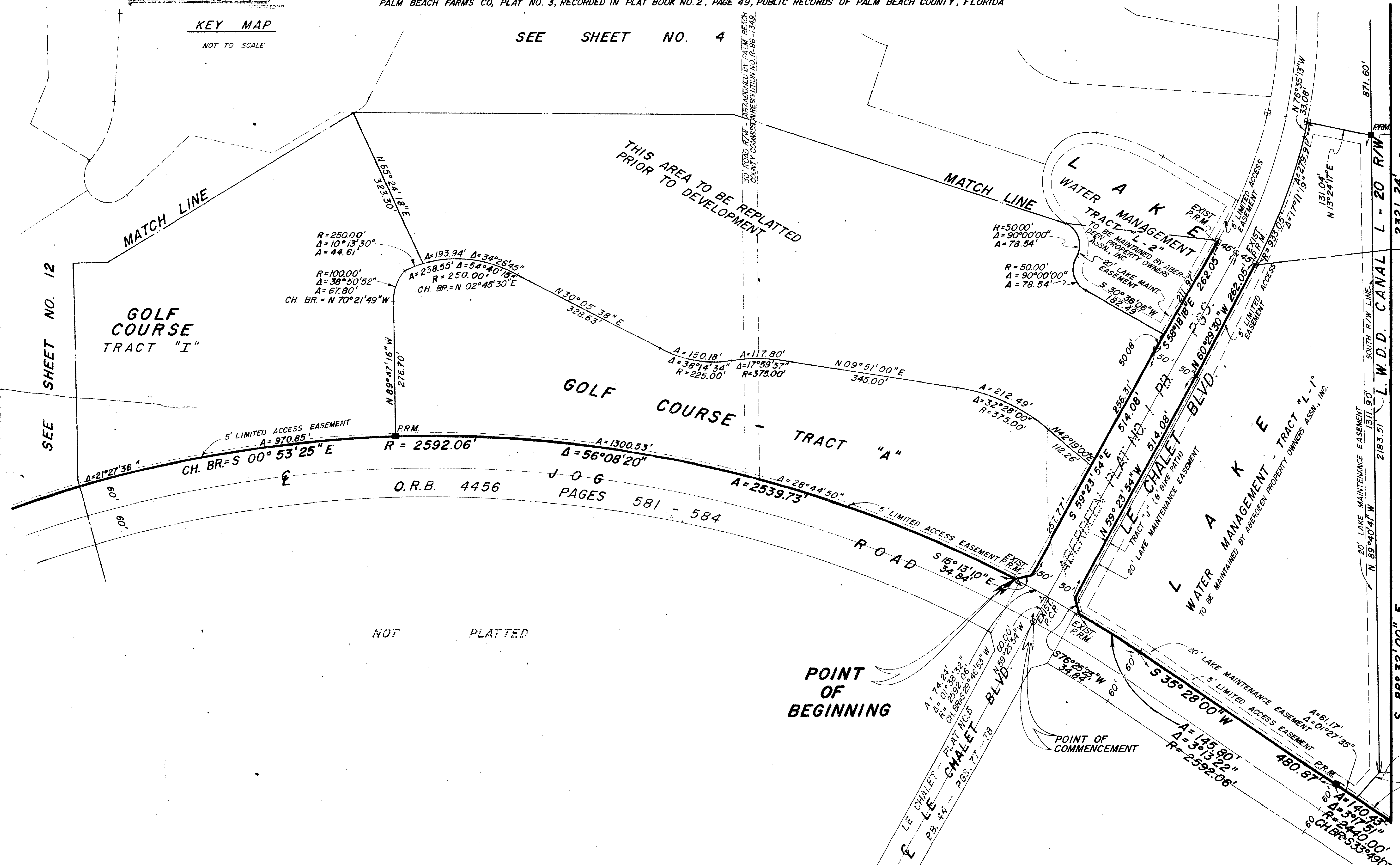
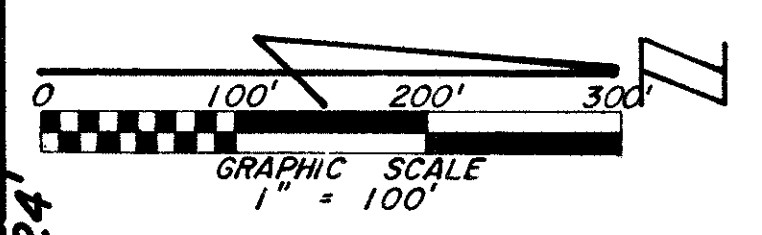
A PORTION OF A (P.U.D.)
SECTIONS 15 & 16, TOWNSHIP 45 SOUTH, RANGE 42 EAST

PALM BEACH COUNTY, FLORIDA - AUG., 1986
BEING A REPLAT OF A PORTION OF BLOCK 47 AND THE SCHOOL TRACT LYING IN SECTION 16, TOWNSHIP 45 SOUTH, RANGE 42 EAST,
PALM BEACH FARMS CO, PLAT NO. 3, RECORDED IN PLAT BOOK NO. 2, PAGE 49, PUBLIC RECORDS OF PALM BEACH COUNTY, FLORIDA

SEE SHEET NO. 4

13

STATE OF FLORIDA }
COUNTY OF PALM BEACH } ss
This Plat was filed for record at _____ M.
this _____ day of _____
19 _____, and duly recorded in Plat Book No. _____
on page _____
JOHN B. DUNKLE, Clerk Circuit Court
By _____, D.C.



NOT PLATTED

POINT OF BEGINNING

POINT OF COMMENCEMENT

55/13
0270-306
N 01°28'00"E
16.82'
N 43°32'00"W
70.45'
R = 2440.00'
Δ = 1°50'16"
A = 78.26'
CH. BR. = S 33°05'16"W

ROSSI AND MALAVASI ENGINEERS, INC. WEST PALM BEACH, FLORIDA		ABERDEEN PLAT NO. 2 IN 12 SHEETS SHEET NO. 3	
Date	AUGUST, 1986	Designed	T. J. CURBELO
Drawn	T. J. CURBELO	Scale	1" = 100'
Checked	T. J. CURBELO	Job No.	
File No.		Sheet	3 of 12